

Hawkins County Schools Child Find Program



Provides information and intervention for children and young adults, ages 3 to 21 who have exceptional educational needs.

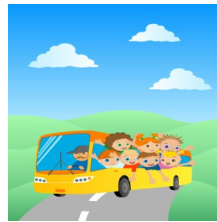
Eligibility areas are:

- Autism
- Deaf-Blindness
- Deafness
- Developmental Delay
- Emotional Disturbance
- Functional Delay
- Hearing Impairment
- Intellectually Gifted
- Mental Retardation
- Multiple Disabilities
- Orthopedic/Physical Impairment
- Other Health Impairment
- Specific Learning Disability
- Speech/Language Impairment
- Traumatic Brain Injury
- Visual Impairment

The Hawkins County School System does not discriminate on the basis of race, color, national origin, religion, sex, age, or disability in its educational programs or employment policies as required by Titles VI and VII of the Civil Rights Act of 1964, the Equal Pay Act of 1973, Title IX (1972 Educational Amendments), Section 504 of the Rehabilitation Act of 1973, and the American with Disabilities Act.

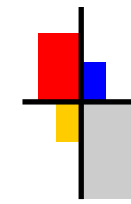
Any person having inquiries concerning the system's compliance with these regulations should contact:

**Hawkins County Board of Education
Director's Office
200 North Depot Street
Rogersville, TN 37857
Phone: 423-272-7629.**



The reauthorization of the Individuals with Disabilities Education Act requires the Hawkins County School System to consult with representatives of private schools or parents who choose to home school their children.

**For further information contact:
Hawkins County Schools
Department of Special Education
423-272-7629, ext. 150**



Hawkins County Schools

Child Find Program



The Mission for Hawkins School System, in partnership with all stakeholders, is to "Educate and Graduate Each Student."



Hawkins County Schools Child Find Program

The Hawkins County School System is committed to providing opportunities for all children to be successful during their educational program. The school system provides information to parents and guardians concerning programs offered to assist children who have special needs. An early intervention program may occur as early as 3 years of age with continuous intervention through age 21.



PURPOSE

The purpose of child find is to locate and evaluate children who are suspected of having a disability. If it is determined that the disability interferes with learning, special education and/or related services may be recommended. Related services may include (but are not limited to) Speech/Language Therapy, Occupational Therapy and Physical Therapy.

WHO MAY REFER CHILDREN?

Referrals for screening may be made by parents, teachers, physicians, public service agencies, or other concerned individuals.

WHAT IS THE CHILD FIND PROCESS?

Step 1

A screening process may occur to determine the possibility of delays in the development of the child.

Step 2

An evaluation may occur to assess eligibility for pre-school special education programs and to identify the child's strengths and needs.

Step 3

Once eligibility has been established, an individualized program is planned by an IEP (Individual Educational Program) Team, which includes the parent/guardian of the child.

Educational intervention may continue when the child enters school, and may be maintained until the age of 21, depending on the child's individual needs.