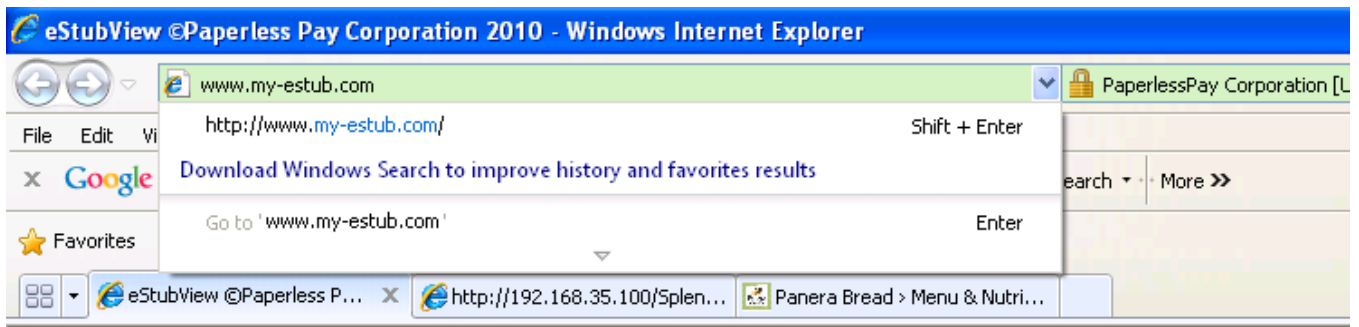
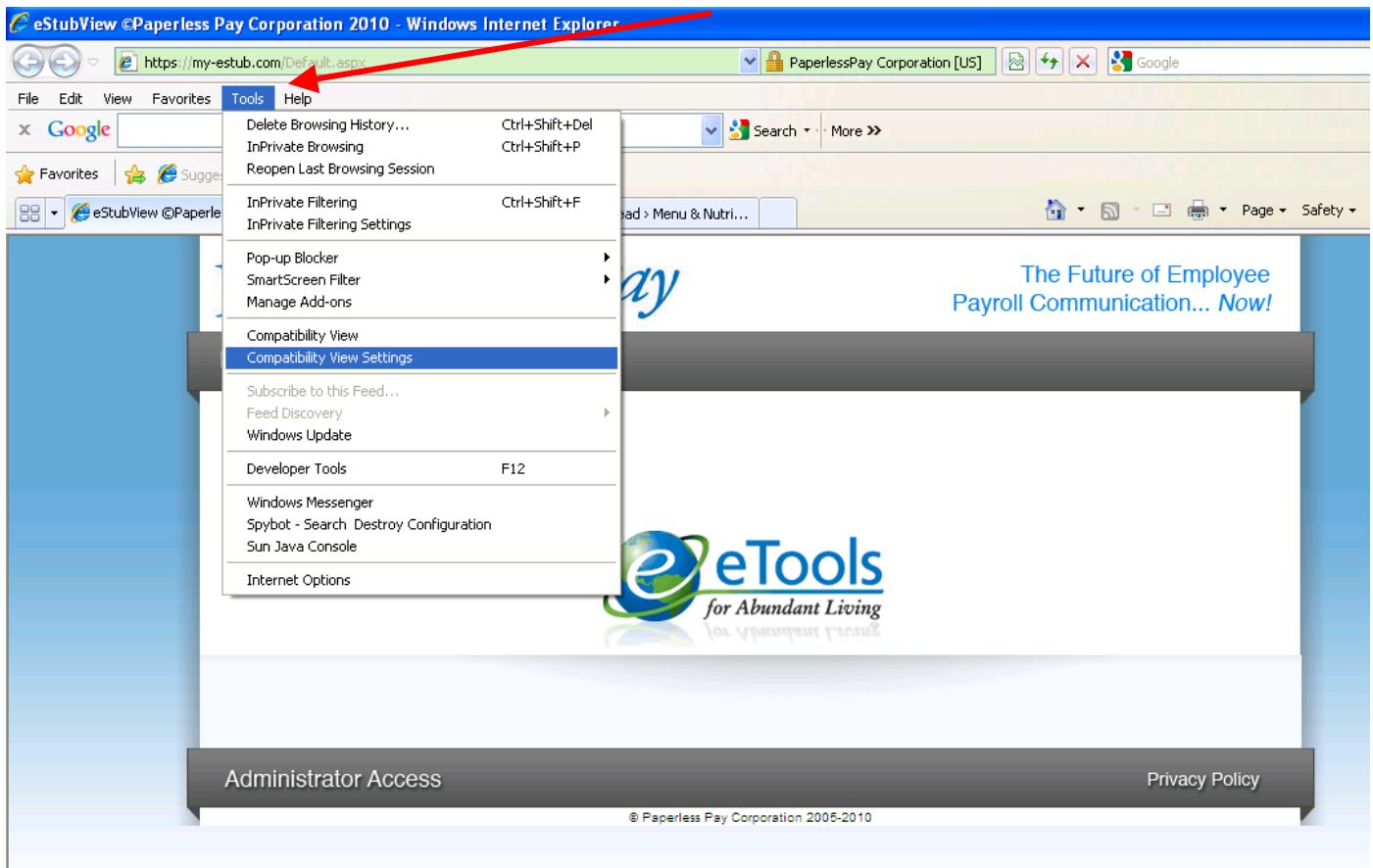


Compatibility View for Internet Explorer 9

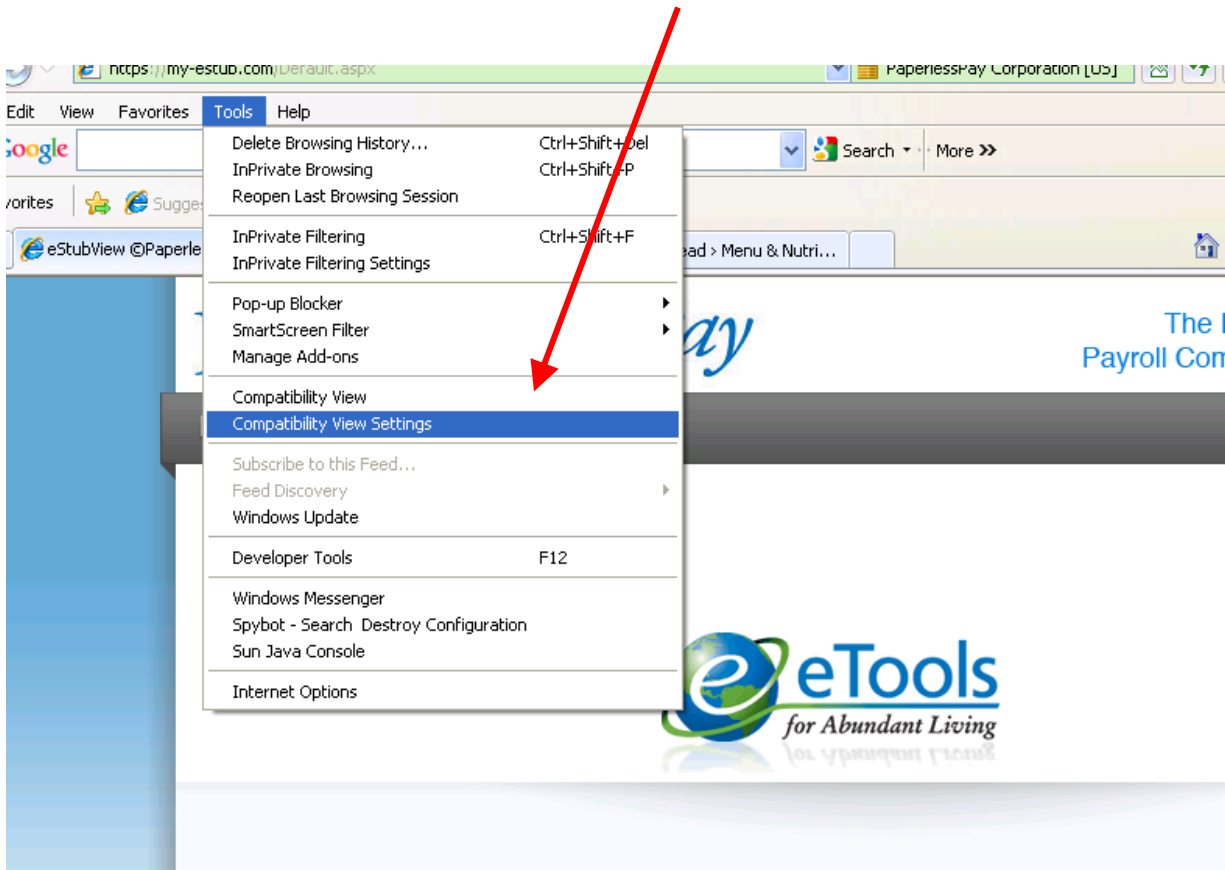
1. Open up your browser and type the internet address into the field:
<https://my-estub.com>



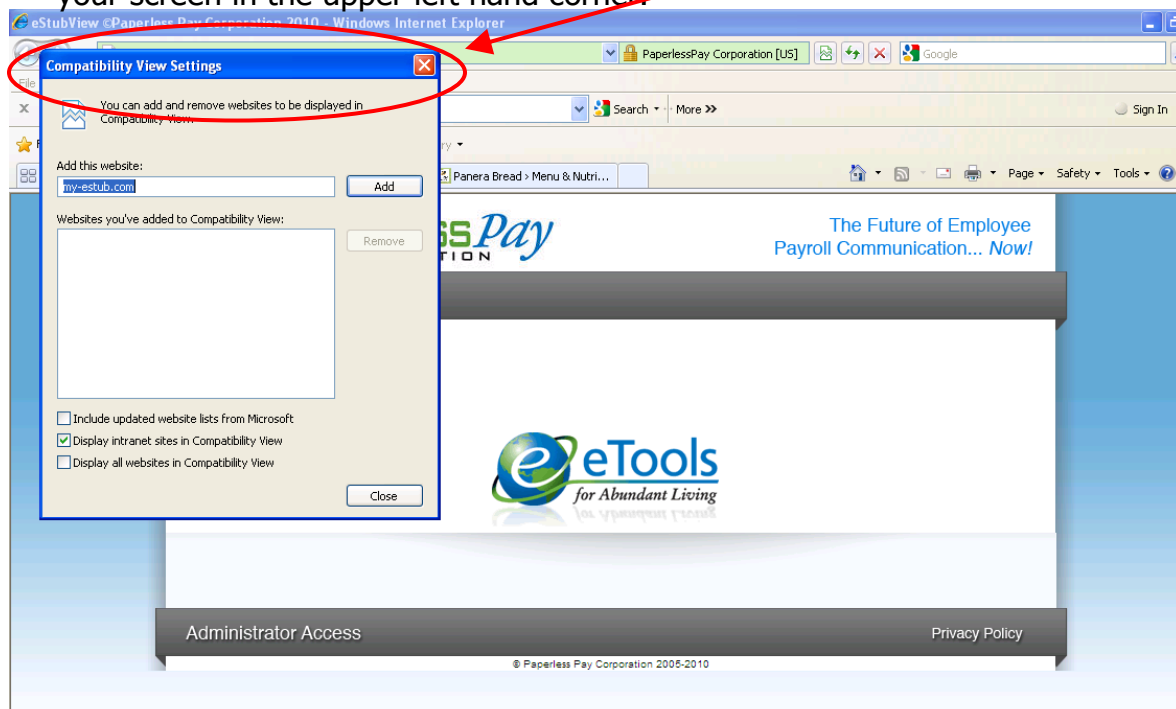
2. At the top of the screen you will see File, Edit, View, Favorites, Tools, and Help. You will click on the **Tools** option



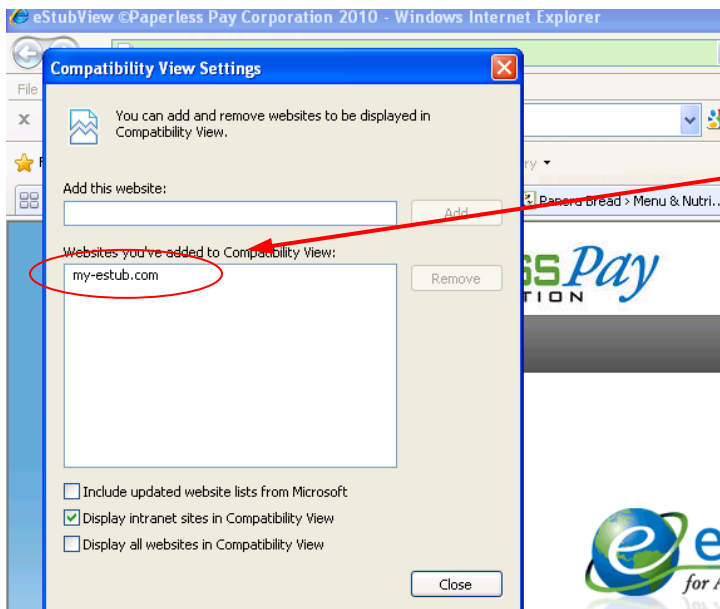
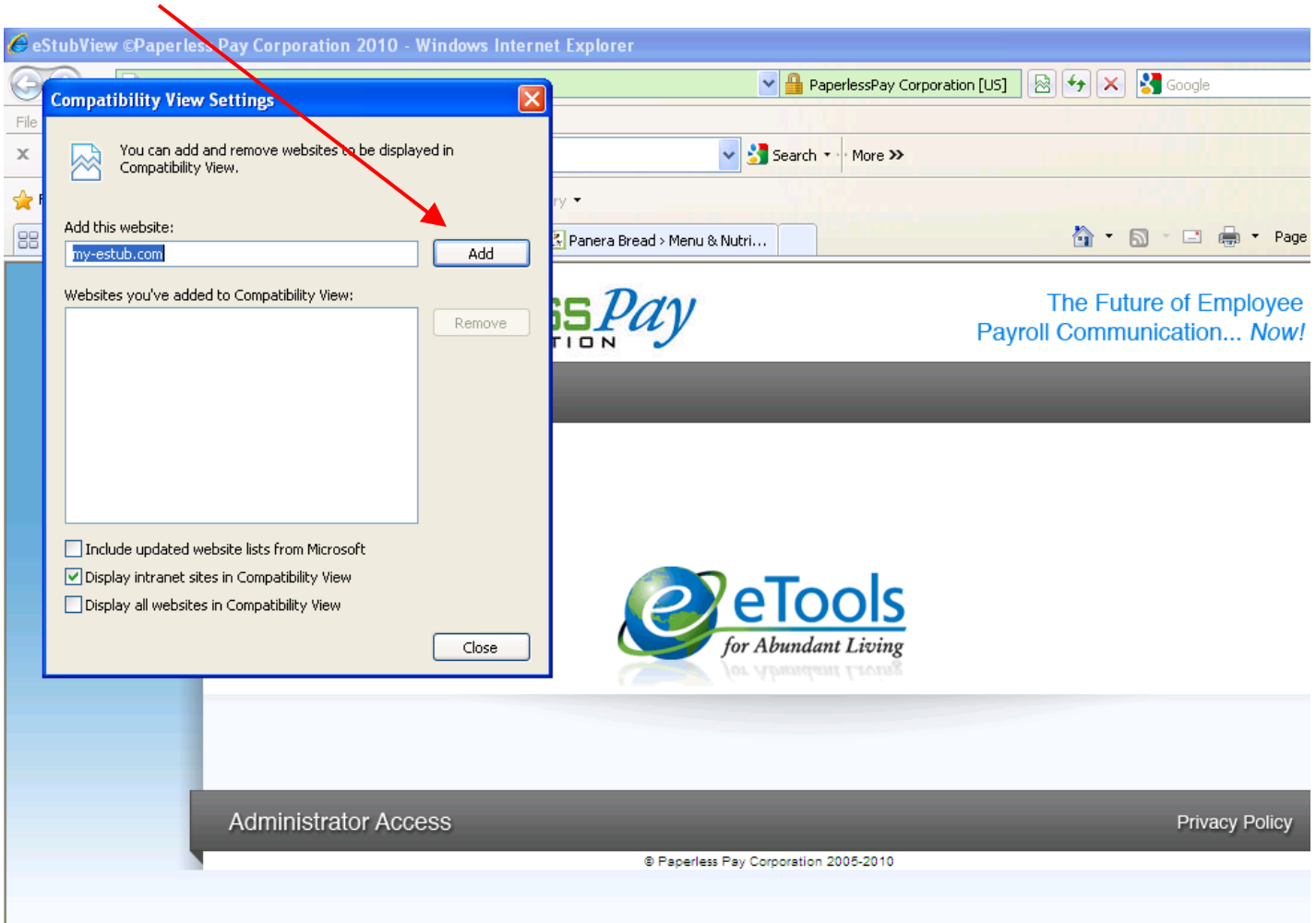
3. You will then choose **Compatibility View Settings**:



A box labeled **Compatibility Viewing Settings** will automatically appear on your screen in the upper left hand corner.

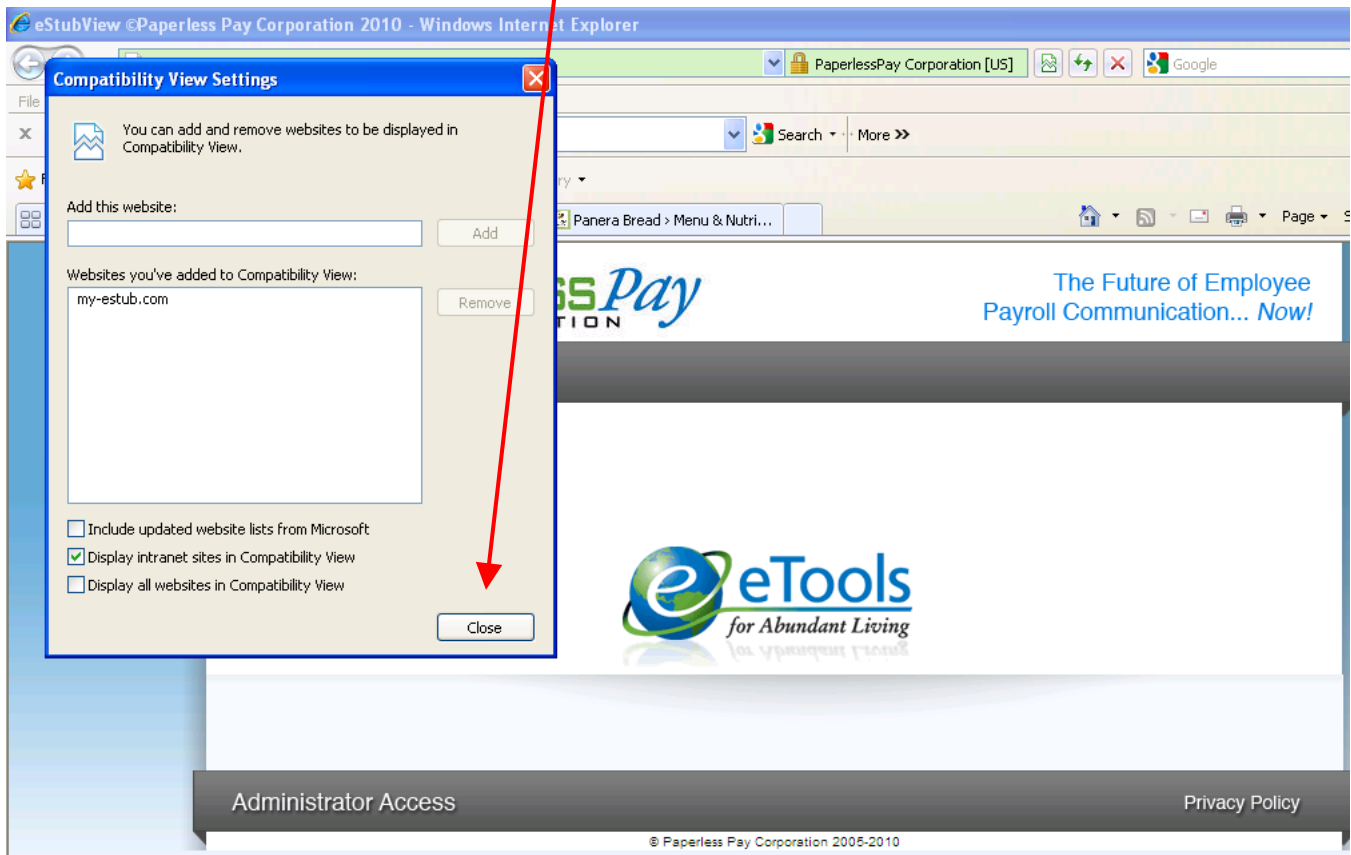


- The option for my-estub will already be highlighted. You will simply click the **Add** Button which will then add https://my-estub.com to the box below:



Clicking the **Add** Button will move my-estub.com to the box below, adding it to websites selected for compatibility view

5. The last step is to click the **Close** button at the bottom. This will automatically refresh your screen.



When your screen refreshes it will automatically display <https://my-estub.com> and you will now be able to access the employee portal.